

CLCF1 Antibody (N-term)
Affinity Purified Rabbit Polyclonal Antibody (Pab)
Catalog # AP18774a**Specification**

CLCF1 Antibody (N-term) - Product Information

Application	WB,E
Primary Accession	O9UBD9
Other Accession	O9OZM3 , NP_001159684.1
Reactivity	Human
Predicted	Mouse
Host	Rabbit
Clonality	Polyclonal
Isotype	Rabbit IgG
Calculated MW	25176
Antigen Region	46-72

CLCF1 Antibody (N-term) - Additional Information**Gene ID** 23529**Other Names**

Cardiotrophin-like cytokine factor 1, B-cell-stimulating factor 3, BSF-3, Novel neurotrophin-1, NNT-1, CLCF1, BSF3, CLC, NNT1

Target/Specificity

This CLCF1 antibody is generated from rabbits immunized with a KLH conjugated synthetic peptide between 46-72 amino acids from the N-terminal region of human CLCF1.

Dilution

WB~~1:1000

E~~Use at an assay dependent concentration.

Format

Purified polyclonal antibody supplied in PBS with 0.09% (W/V) sodium azide. This antibody is purified through a protein A column, followed by peptide affinity purification.

Storage

Maintain refrigerated at 2-8°C for up to 2 weeks. For long term storage store at -20°C in small aliquots to prevent freeze-thaw cycles.

Precautions

CLCF1 Antibody (N-term) is for research use only and not for use in diagnostic or therapeutic procedures.

CLCF1 Antibody (N-term) - Protein Information**Name** CLCF1

Synonyms BSF3, CLC, NNT1

Function In complex with CRLF1, forms a heterodimeric neurotropic cytokine that plays a crucial role during neuronal development (Probable). Also stimulates B-cells. Binds to and activates the ILST/gp130 receptor.

Cellular Location

Secreted.

Tissue Location

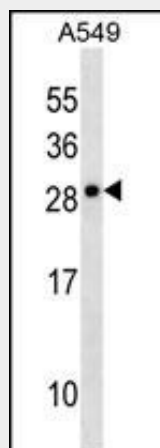
Expressed predominantly in lymph nodes, spleen, peripheral blood lymphocytes, bone marrow, and fetal liver

CLCF1 Antibody (N-term) - Protocols

Provided below are standard protocols that you may find useful for product applications.

- [Western Blot](#)
- [Blocking Peptides](#)
- [Dot Blot](#)
- [Immunohistochemistry](#)
- [Immunofluorescence](#)
- [Immunoprecipitation](#)
- [Flow Cytometry](#)
- [Cell Culture](#)

CLCF1 Antibody (N-term) - Images



CLCF1 Antibody (N-term)(Cat. #AP18774a) western blot analysis in A549 cell line lysates (35ug/lane). This demonstrates the CLCF1 antibody detected the CLCF1 protein (arrow).

CLCF1 Antibody (N-term) - Background

This gene is a member of the glycoprotein (gp)130 cytokine family and encodes cardiotrophin-like cytokine factor 1 (CLCF1). CLCF1 forms a heterodimer complex with cytokine receptor-like factor 1 (CRLF1). This dimer competes with ciliary neurotrophic factor (CNTF) for binding to the ciliary neurotrophic factor receptor (CNTFR) complex, and activates the Jak-STAT signaling cascade. CLCF1 can be actively secreted from cells by forming a

complex with soluble type I CRLF1 or soluble CNTFR. CLCF1 is a potent neurotrophic factor, B-cell stimulatory agent and neuroendocrine modulator of pituitary corticotroph function. Defects in CLCF1 cause cold-induced sweating syndrome 2 (CISS2). This syndrome is characterized by a profuse sweating after exposure to cold as well as congenital physical abnormalities of the head and spine. Alternative splicing results in multiple transcript variants encoding distinct isoforms.

CLCF1 Antibody (N-term) - References

Rousseau, F., et al. J. Biol. Chem. 283(44):30341-30350(2008)
Dagoneau, N., et al. Am. J. Hum. Genet. 80(5):966-970(2007)
Rousseau, F., et al. Proc. Natl. Acad. Sci. U.S.A. 103(26):10068-10073(2006)
Perret, D., et al. J. Biol. Chem. 279(42):43961-43970(2004)
Burger, R., et al. Br. J. Haematol. 123(5):869-878(2003)